

COMUNE DI CAMPOTOSTO

AREE OGGETTO DI ESPROPRIO PER MAP O MUSP

DECR. N. 15 DEL 31/07/2009

CAMPOTOSTO CAPOLUOGO

MUSP

Fg.	Part. N.	Sub.		
26	1140			

DECR. N. 36 DEL 03/11/2009

CAMPOTOSTO CAPOLUOGO

MAP

Fg.	Part. N.			
26	1085	divenuta	1811 e 1812	1811 divenuta:1982 e 1983
	1806			
	1807	divenuta	1973 e 1974	
	1809	divenuta	1975 e 1976	

MUSP

Fg.	Part. N.			
26	880	divenuta	1866	
			1867	
			1868	
			1869	
			1870	

DECR. N. 20 DEL 28/08/2009

CAMPOTOSTO CAPOLUOGO

MUSP

Fg.	Part. N.		
-----	----------	--	--

26	1140		
----	------	--	--

MAP

Via Lago

Fg.	Part. N.		
-----	----------	--	--

26/A	606		
26/A	609		
26/A	654		
26/A	1857		
26/A	1811	divenuta	1982 e 1983
26/A	1812		
26/A	1820		
26/A	1854		
26/A	1855		
26/A	1856		
26/A	1810		

Via Castello

Fg.	Part. N.		
-----	----------	--	--

14	483		
14	484		
14	485		
14	490		
14	491		
14	492		
14	493		
14	494		
14	498		
14	500		
14	502		
14	516		
14	551		
14	553		
14	515		
14	499		
14	503		

POGGIO CANCELLI

MAP

Fg.	Part. N.		
-----	----------	--	--

10	1361		
10	1363		
10	1364	divenuta	1451 e 1452

10	1366			
10	1368			
10	66			
10	88			

ORTOLANO

MAP

Fg.	Part. N.			
------------	-----------------	--	--	--

46	37			
46	45			
46	30			
46	29			

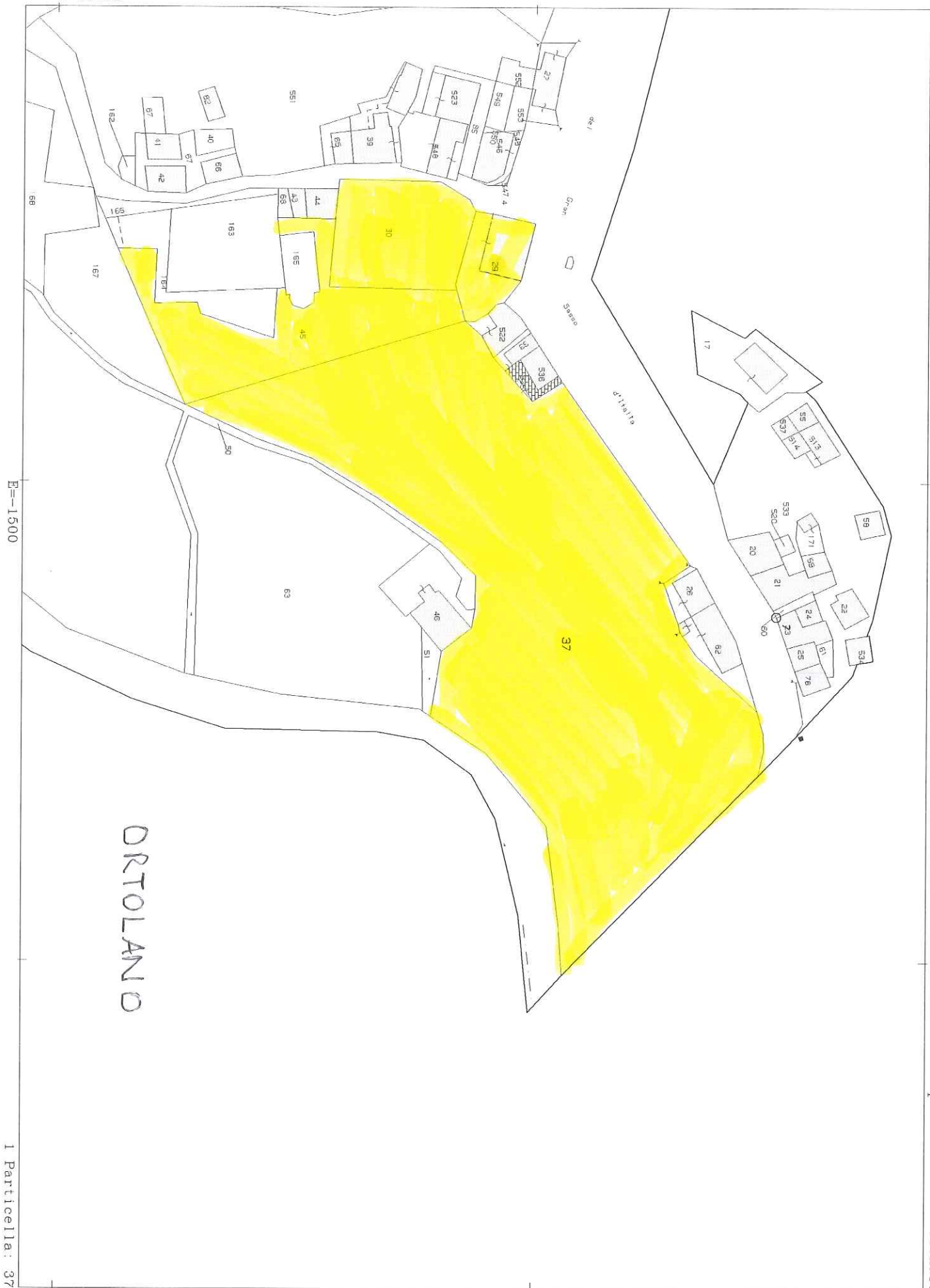
MASCIONI

MAP

Fg.	Part. N.			
------------	-----------------	--	--	--

38	980			
38	977	divenuta	3127 e 3128	
38	976			
38	975			
38	968			
38	2314			
38	2313			
38	2518			

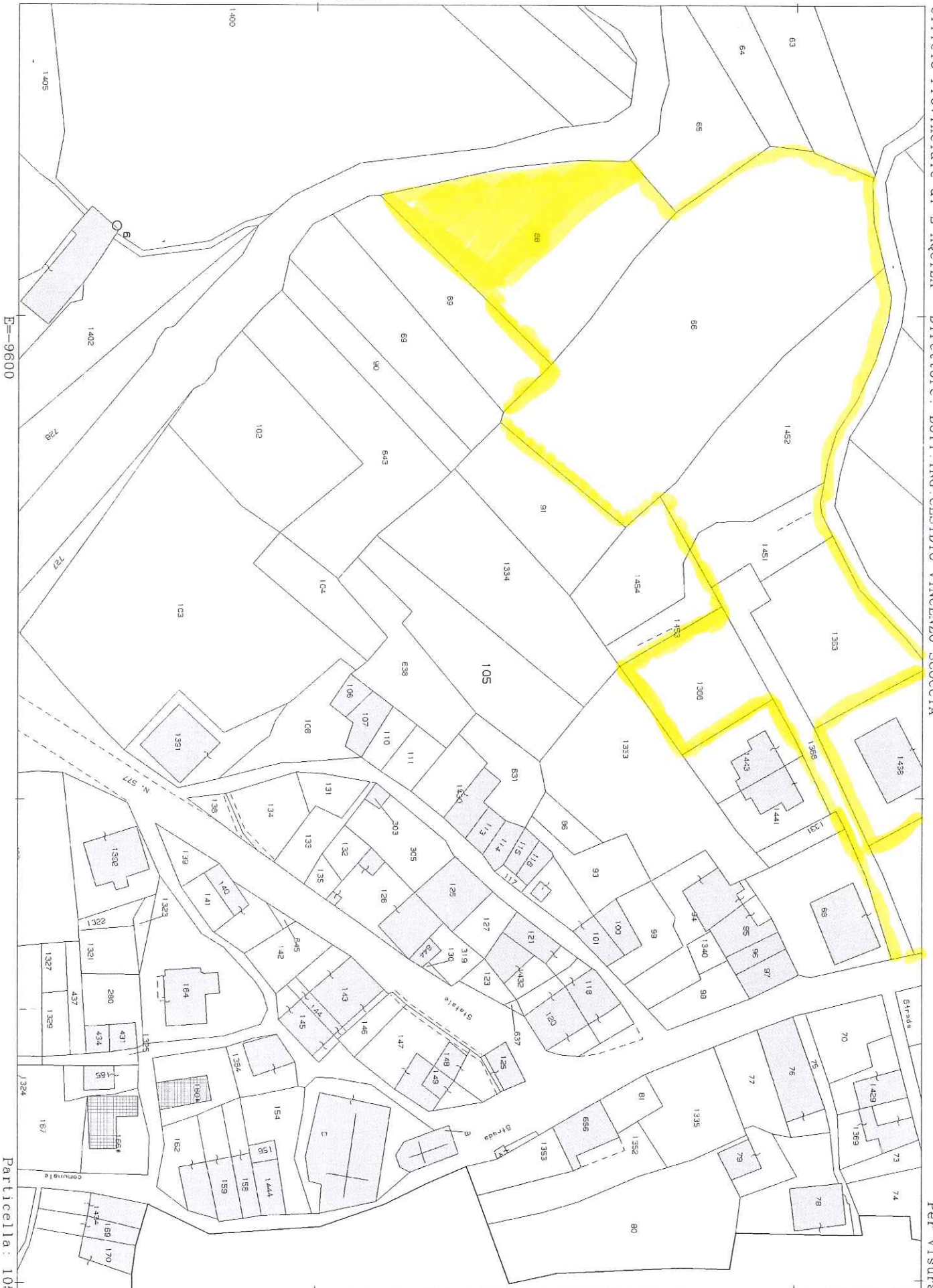
N=29100



E=1500

I Particella: 37

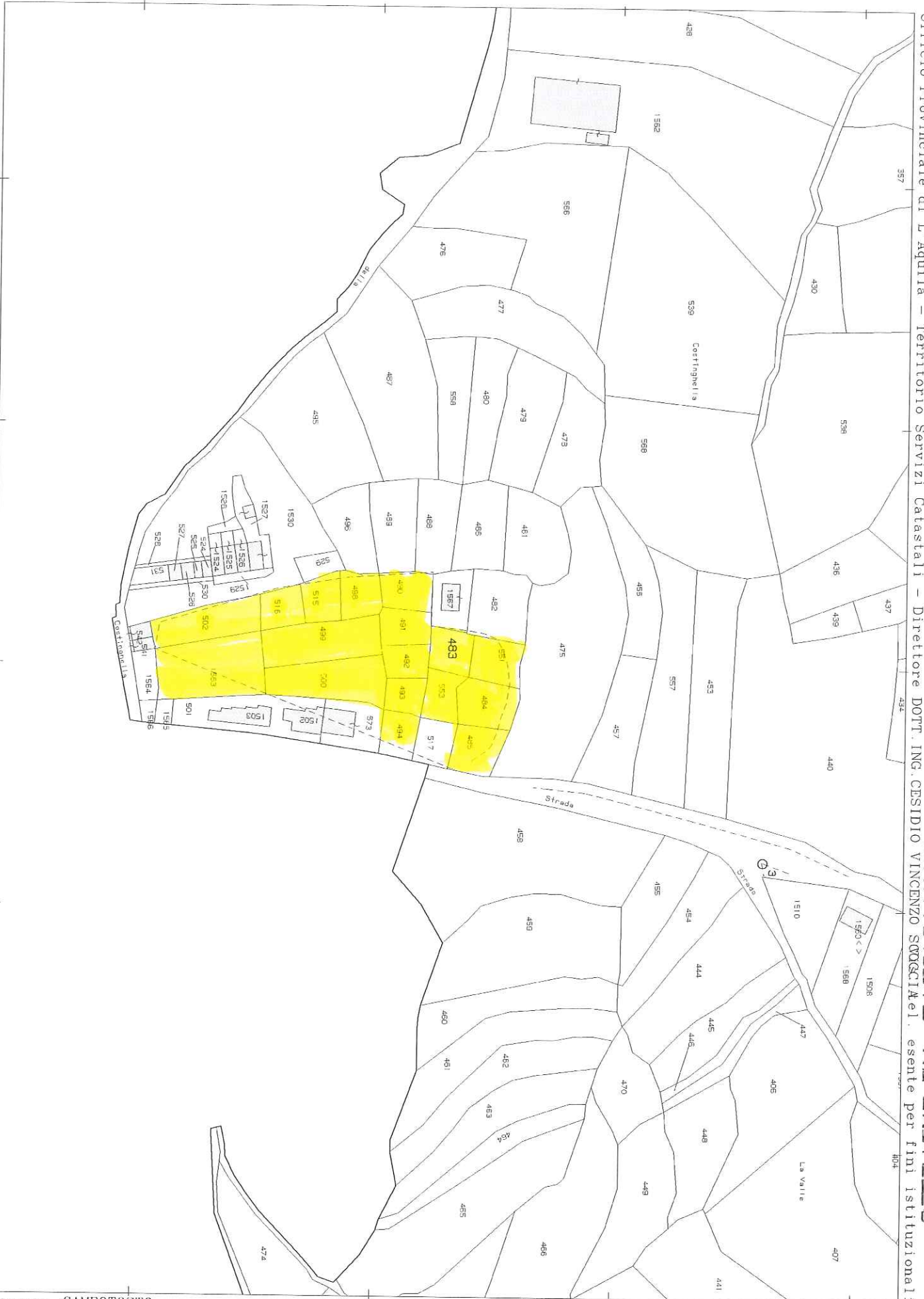
N=34100



E=9600

Particella: 105

CAMPOTOSTO - VIA CASTELLO

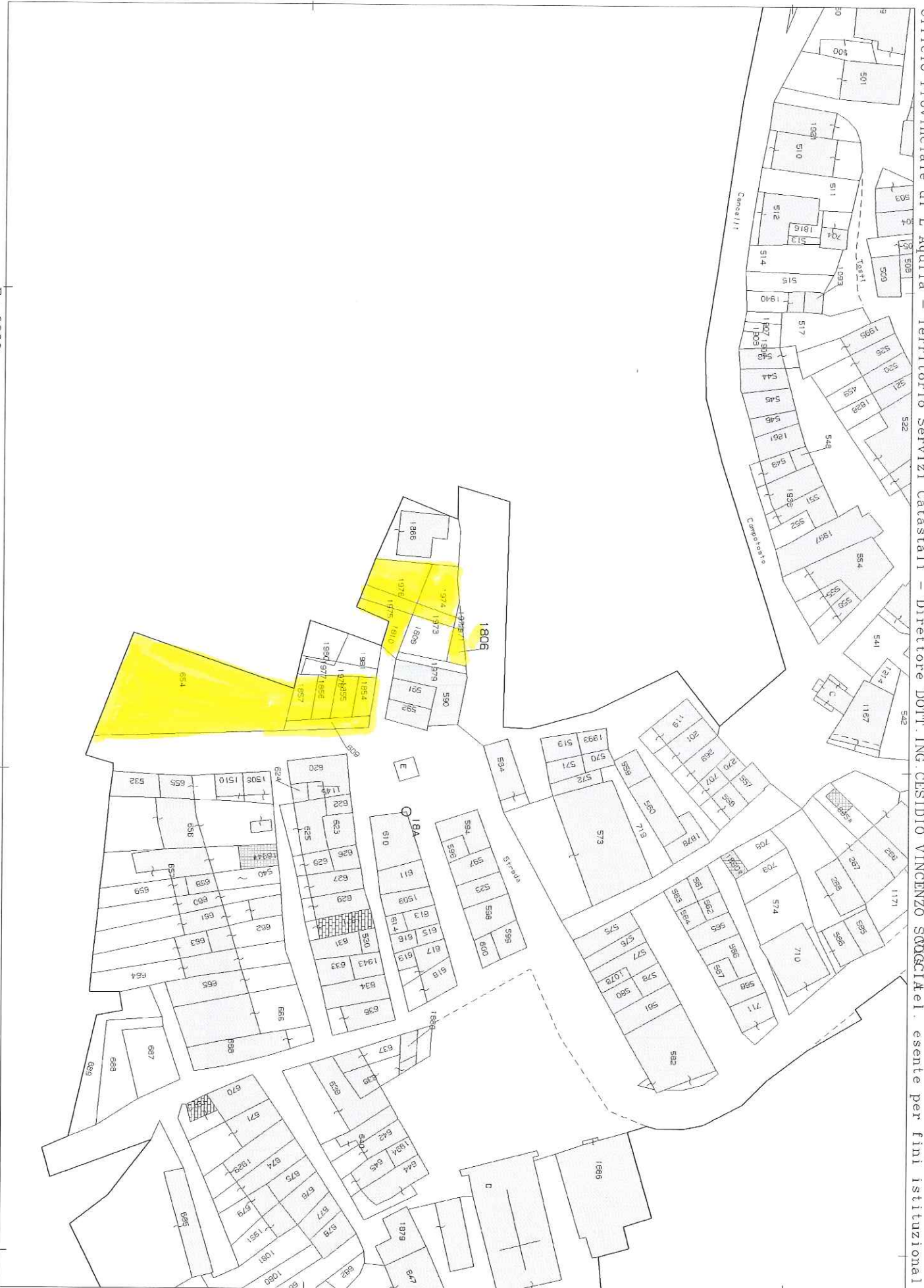


E=6400

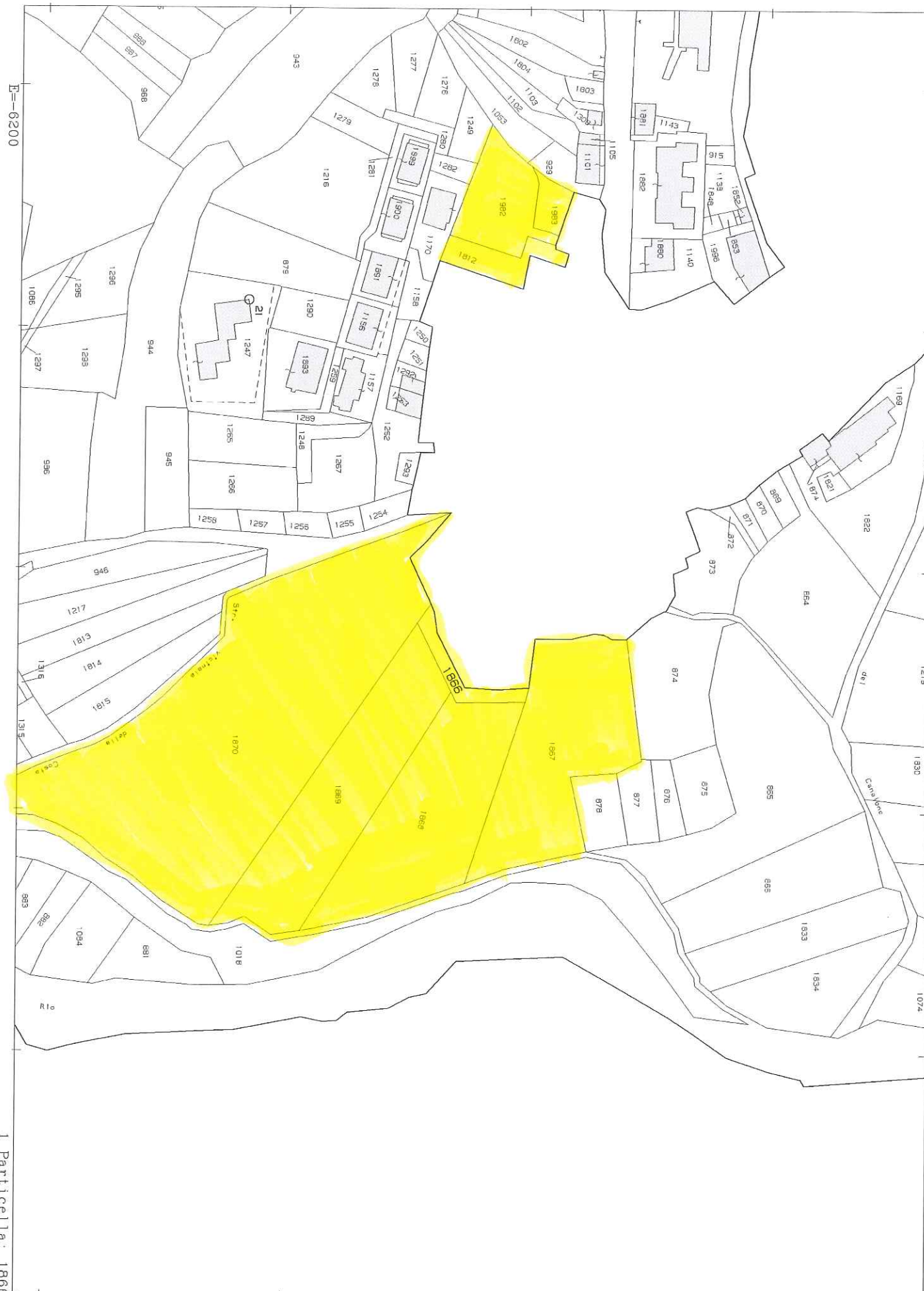
1 Particella: 483

E=6200

I Particella: 1806



CAMPOTOSTO



E=6200

I Particella: 1866